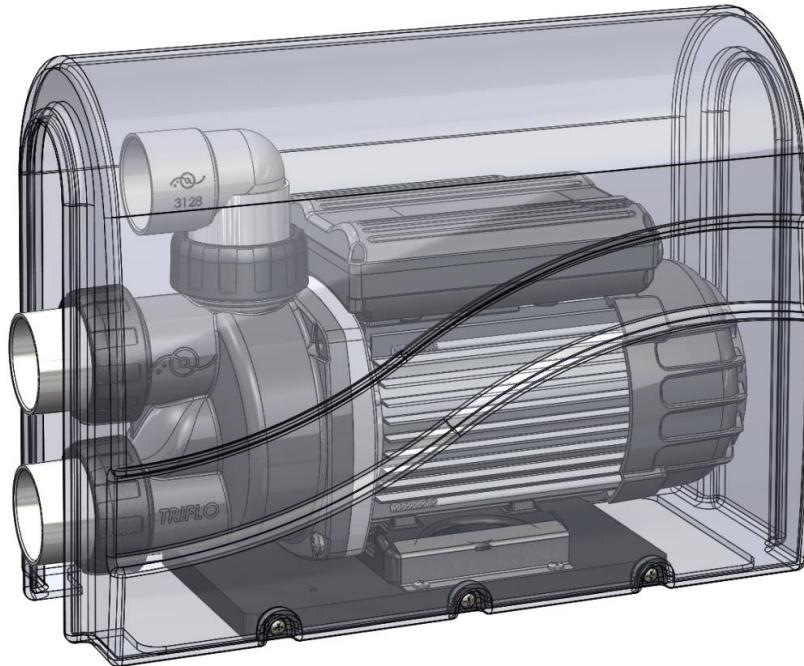
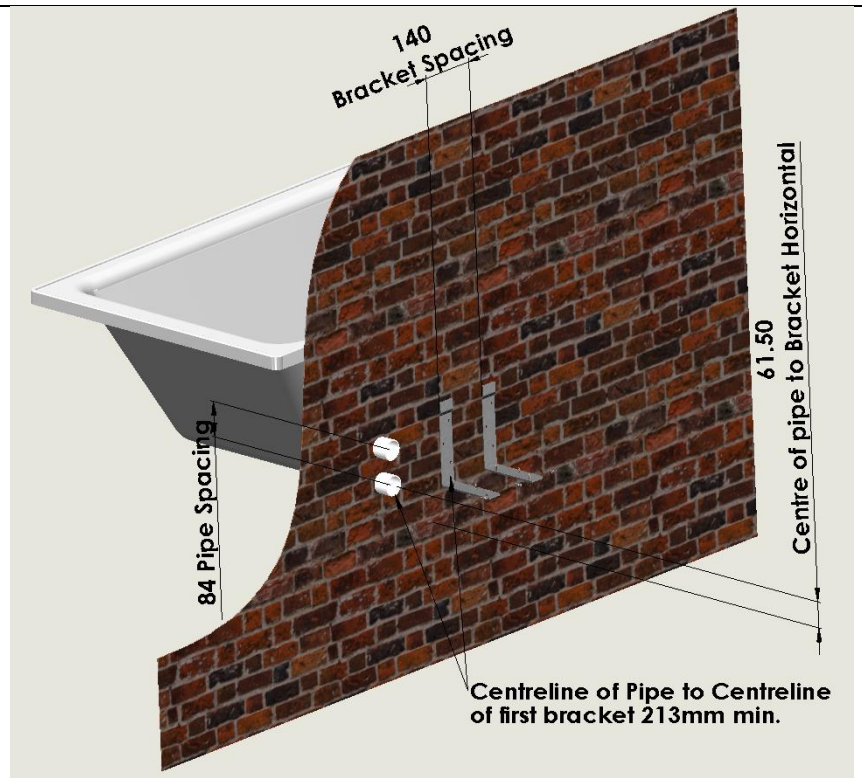


Pro-Tec Spa Bath Pump Cover

INSTALLATION INSTRUCTION

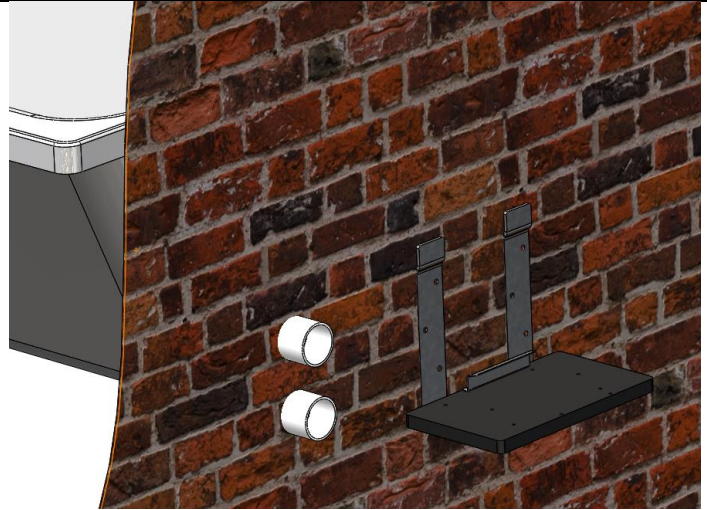


1. Read Instructions fully before commencing installation. Refer last page for Bracket Template dimensions
 2. Check position of Pipe Outlets fitting through the wall
 3. Mount the pump on LHS - or RHS of pipe outlets
 4. Fit the two angle brackets onto the wall at correct height to suit the pump.
 5. The centreline of the first bracket should be 213 mm from centreline of the pipe.
 6. The horizontal bar of the brackets is mounted 61.5 mm below the centre of the lower pipe.
 7. Mount the Angle brackets 140 mm apart. This will ensure the bracket mounting holes line up with the predrilled holes in the base plate.
- Refer Page 4 for Bracket Template Dimensions**



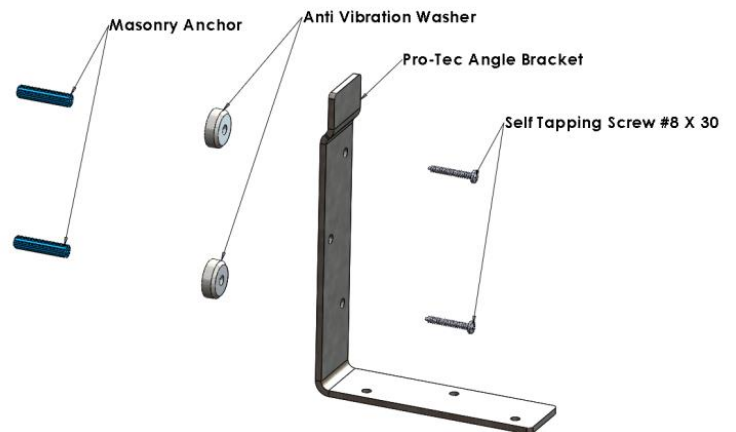
8. Fit the base plate - requires 6 #10 X 16 Self Tapping Screws (Supplied). The inner pump Foot Bracket is already assembled onto the base plate. **Hint - you can fit the angle brackets to the base plate before mounting on the wall - this ensure the correct spacing of the angle brackets.**

9. Masonry anchors are not supplied. To secure the Angle brackets to the wall, Use masonry anchors, or wood screws or appropriate securing fixture.



10. Different Wall structure may require different Mounting methods. **Masonry anchors or alternate fastening to be supplied by Installer.**

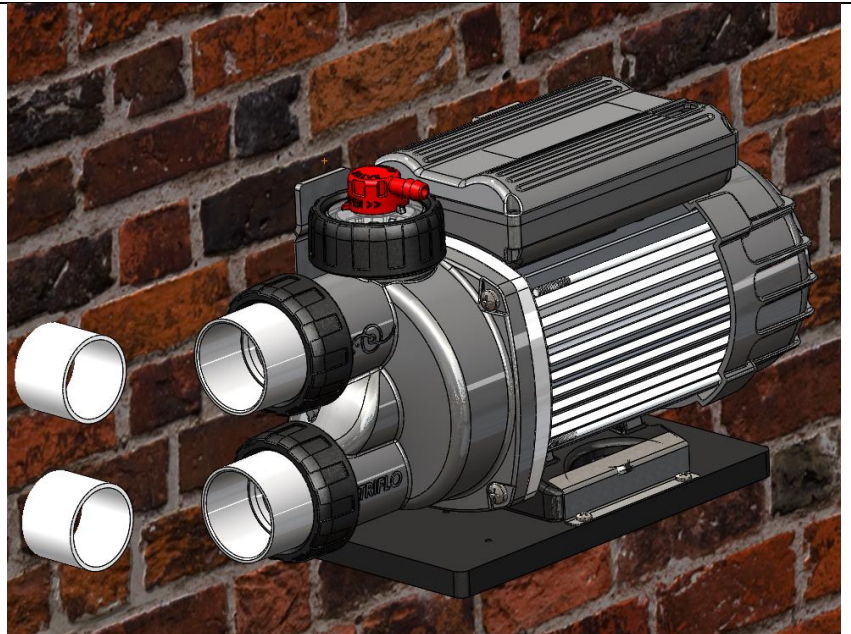
11. Fit Pro-Tec Anti Vibration washer between Angle Bracket and Wall (Attenuates noise and vibration transmission into wall)



NOTE: Different Wall Construction requires different attachment fixture. Masonry anchor and Screw - supplied by INSTALLER

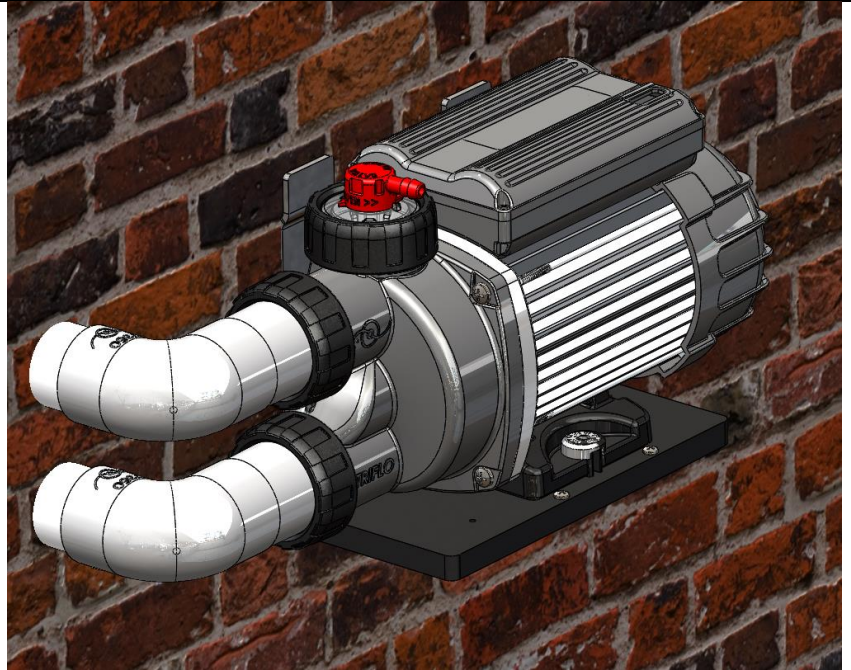
12. Place the pump onto the base plate - the pump mount foot will sit snug under the inner Foot Bracket. The foot bracket is designed to allow sideway positioning of the pump to match with the pipe outlet.

13. Fit the outer Foot Bracket - requires 2 #10 X 16 Self Tapping Screws (Supplied).

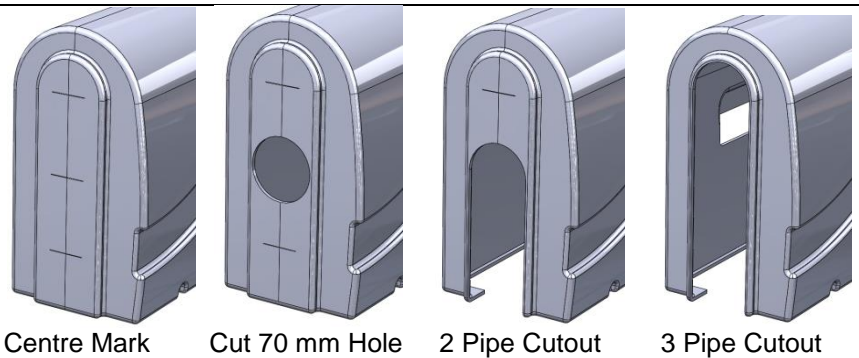


14. Connect pipework plumbing - as required. Minimum 2 - 40mm X 90 Elbows

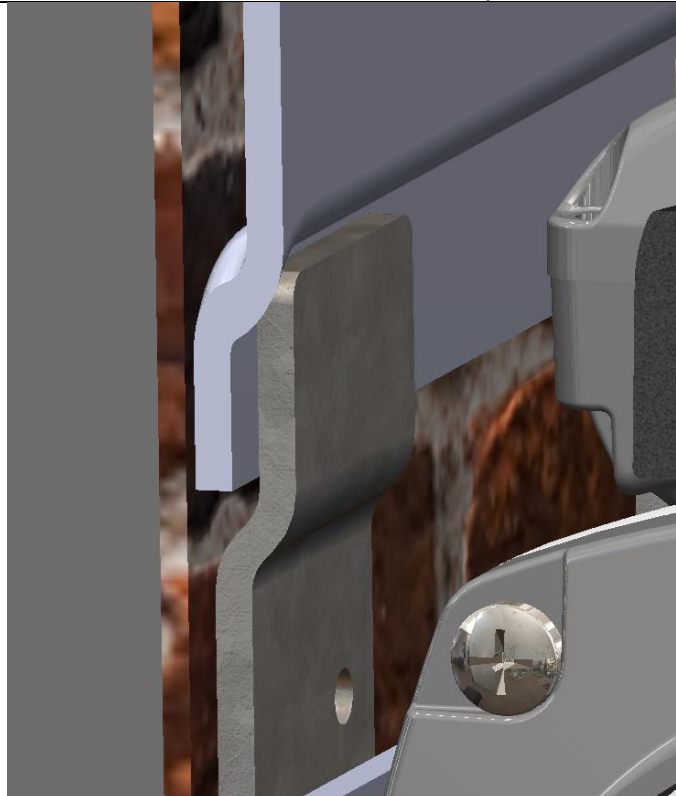
15. Make sure you run the Air Tube from the Air Switch, or if electronic control, run the RJ45 cable from touchpad to the back of the Control box.



16. Cut out the side of the Cover - either RH or LH entry. There are guide marks at each end for centring a 70 mm diameter hole. Cut the cover using a sharp knife OR use jig saw. Cut out material to suit the 2 or 3 pipe system.

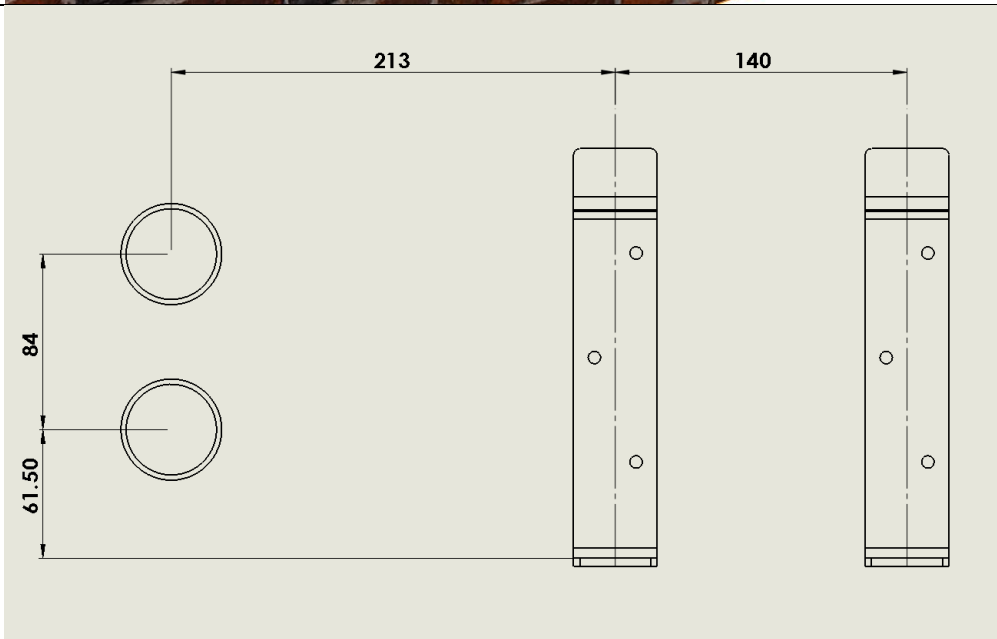
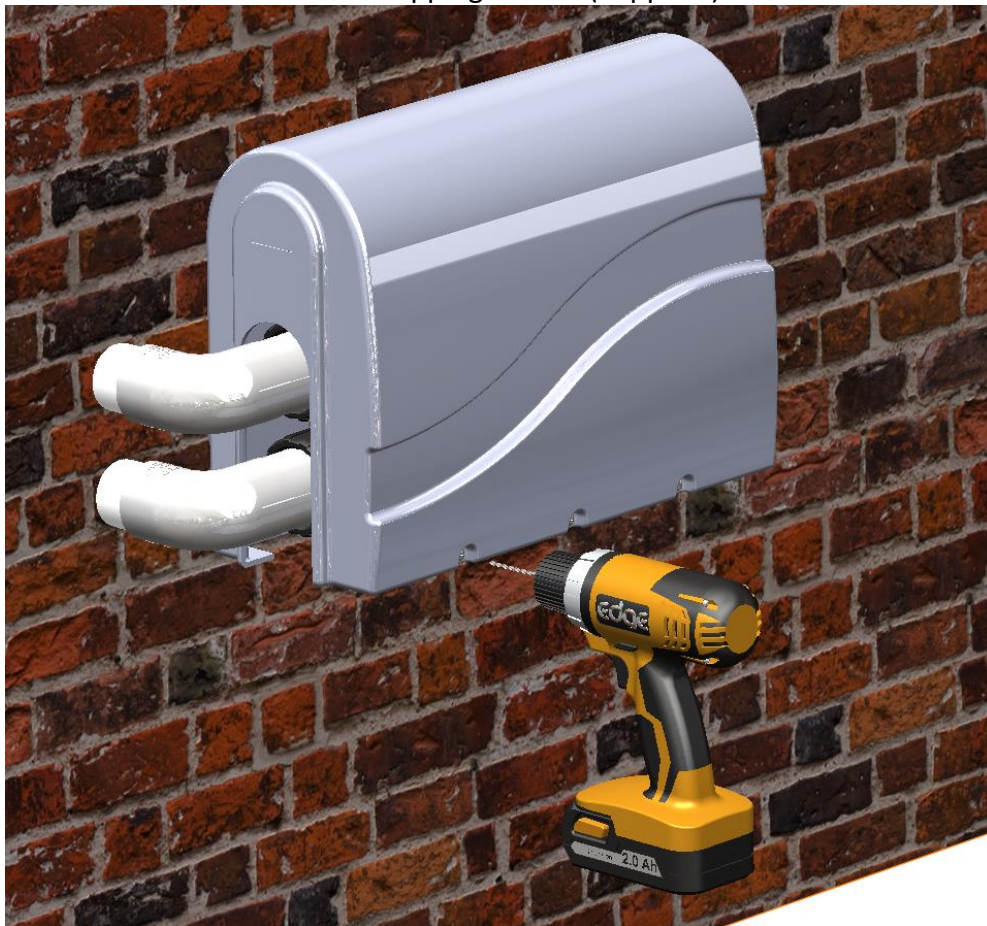


17. Slide Pro-Tec Cover over the top of the wall brackets. The cut out at the rear of the Cover will engage with the offset tab at the top of the angle bracket.



18. Pre-drill three holes in Pump Base Plate using 3-3.5 mm drill - Most important!

19. Secure the Cover with the 3 #10 X 16 Self Tapping Screws (Supplied).



Bracket Template Dimensions

Edgetec Systems Pty Ltd | ABN 66 071 216 423 13

A| 13 Lieber Grove, Carrum Downs VIC 3201 Australia

P.O. Box 8503 Carrum Downs VIC 3201 Australia

T| 03 9775 0882 F| 03 9775 0881

E| sales@edgetec.net W| www.edgetec.net

Pro-Tec Installation Instructions.pdf Feb-15

