

## Installation Instructions Adjustable VSR Retrofit Kit

### Material and tools required:

- PVC Glue and applicator (not included in the kit)
- A cloth rag (not included in the kit)

### Instructions:

1. Drain the water level below the jet being worked on from the SPA. See Picture 1 below.
2. Turn off all the electrical power to the SPA. Ensure that heater and water pump are turned off.
3. Remove the handle assembly from the existing jet body by rotating the handle clockwise. Some force may be needed to remove the handle due to water salt build up.
4. Clean and dry inside wall of the existing jet body as illustrated in Picture 2 below.

**Picture 1**



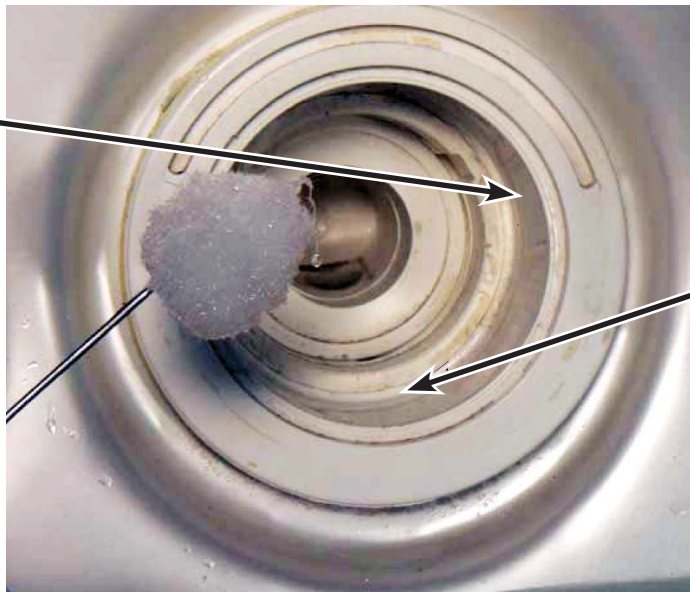
**Picture 2**



5. Apply PVC glue with applicator in the jet body area as illustrated in Picture 3 below.

Apply PVC glue  
on this wall

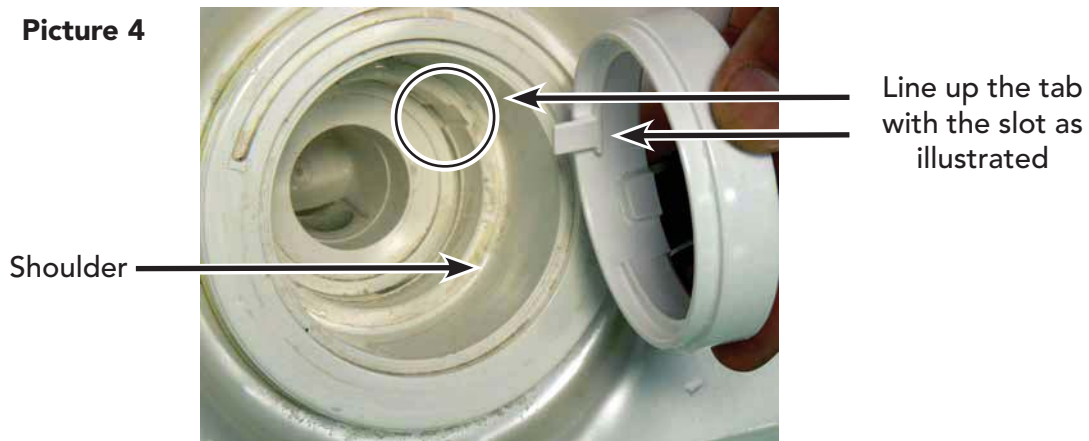
**Picture 3**



Area of coverage  
should be 3/4" wide  
from this shoulder

6. Orient the tab of the retrofit retaining ring towards the jet such that the tab will insert on the inside wall slot of the jet body as illustrated in Picture 4 below.

**Picture 4**



7. Slide the ring all the way down ensuring that there is no gap between the ring and the shoulder.
8. Clean up any excess glue from the jet body.
9. Hold the ring with some pressure for few seconds until PVC glue has bonded the ring with the jet body as illustrated in Pictures 5a & 5b.

**Picture 5a**

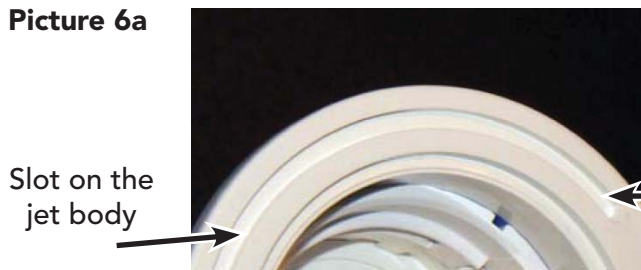


**Picture 5b**

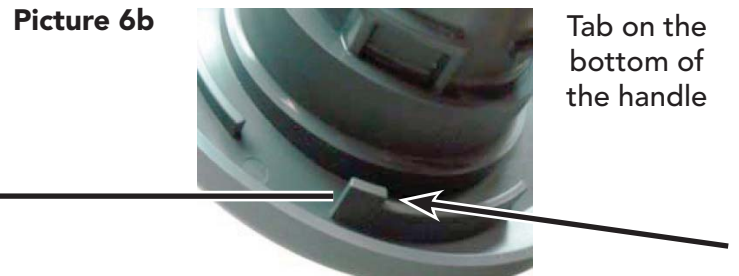


10. Insert the new handle and nozzle assembly into the jet body.
11. Rotate the new handle assembly counter clockwise ensuring that the tab on the bottom of the handle is lined up with the slot on the face of the jet body. You may need to apply some force to engage locking mechanism. See Pictures 6a & 6b below.

**Picture 6a**



**Picture 6b**



12. Gently rotate the handle from right to left and then from left to right to ensure that it opens and closes freely.
13. Turn on all electrical power to the SPA including water pump and heater.
14. Fill the SPA with water.
15. Gently rotate the handle from right to left and then from left to right to ensure that it works properly.